



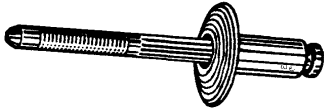
# NEW ITEMS BULLETIN NO. 73

370 ELIZABETH AVENUE, NEWARK, NJ 07112  
(973) 824-2000 FAX (973) 824-7382

WWW.WESALES.COM

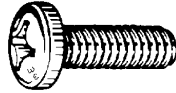
APRIL 2008

**3217**



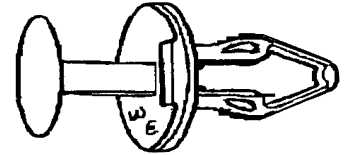
(FORD-N803138-S)  
(REPLACES-FORD-N804523-S,  
GM-9442361, 25609048)  
3/16" SPLIT RIVET-LARGE FLANGE  
(ALUMINUM RIVET/STEEL MANDREL)  
9/16" FLANGE DIAM.  
.046-.203" GRIP RANGE  
UNIT PKG.-25

**3221**



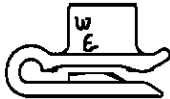
6-1.0 X 16 MM PHILLIPS PAN  
HEAD MACHINE SCREW  
DIN 7985  
ZINC PLATED  
UNIT PKG.-50

**3224**



(11589294)  
PLASTIC PUSH RIVET  
RADIATOR SIGHT SHIELD  
RETAINER, HOOD BRACKET  
FOR 8.5 MM HOLE  
20 MM HEAD DIAM.  
24 MM STEM LENGTH  
GM-2007 & UP  
UNIT PKG.-25

**3225**



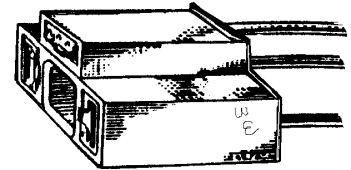
(B4555-6135)(REPL. B37F-50B11)  
PLASTIC U-NUT  
BUMPER COVER &  
FRONT AIR DEFLECTOR  
TAKES 5MM (#10) SCREW  
(OUTSIDE DIMENSIONS-  
20 X 21 MM)  
MAZDA-2003 & UP  
UNIT PKG.-25

**3226**



(BC1D-56-145)  
PLASTIC SCREW RIVET  
BUMPER COVER  
FENDER LINER, MUDGUARDS  
FOR 8 MM HOLE, 20 MM HEAD DIAM.  
9 MM STEM LENGTH  
MAZDA-2004 & UP  
UNIT PKG.-15

**3227**



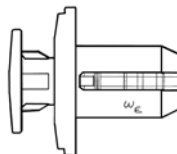
PIGTAIL SOCKET  
FOR 9003 (H4) BULBS  
UNIT PKG.-2

**3228**



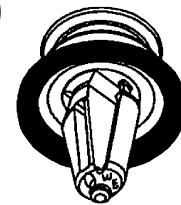
(90467-A0005)  
PLASTIC INTERIOR TRIM  
PANEL RETAINER WITH SEALER  
FOR 8.5 MM HOLE,  
13 MM TOP HEAD DIAM.  
20 MM OVERALL HEIGHT  
TOYOTA/LEXUS 2001 & UP  
UNIT PKG.-15

**3229**



(91503-S0K-A01)  
PLASTIC PUSH RIVET  
GRILLE & AIR DEFLECTOR  
RETAINER  
FOR 10 MM HOLE,  
20 MM HEAD DIAMETER,  
14 MM STEM LENGTH  
HONDA CIVIC, PILOT, ELEMENT  
2003-UP  
UNIT PKG.-15

**3230**



(W 713297-S300)  
PLASTIC DOOR PANEL  
RETAINER  
(WITH SEALER)  
9 MM HOLE  
16 MM TOP HEAD DIAMETER  
28 MM OVERALL HEIGHT  
FORD-FUSION, FOCUS  
MERCURY MILAN- 2007 & UP  
UNIT PKG.-25

3231



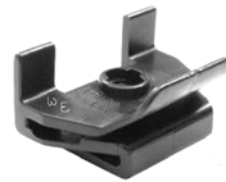
(81126-37010)  
HOOD INSULATION RETAINER  
FOR 8 MM HOLE  
26 MM HEAD DIAMETER  
16 MM OVERALL HEIGHT  
KIA, HYUNDAI 1996 & UP  
UNIT PKG.-25

3232



(53879-60010)  
PLASTIC PUSH RIVET  
FENDER LINER  
FOR 7 MM HOLE  
18 MM HEAD DIAMETER  
7 MM STEM LENGTH  
TOYOTA LAND CRUISER, RAV 4  
LEXUS-LX 470- 1998 & UP  
UNIT PKG.-10

3233



(53879-58010)  
PLASTIC RETAINER  
FRONT FENDER, BUMPER COVER  
OUTSIDE DIMENSIONS:  
25 X 35 MM  
TOYOTA 4 RUNNER, SOLARA,  
HIGHLANDER, SIENNA  
LEXUS-GX 470 2000 & UP  
(USE WITH W&E #3234 PIN)  
UNIT PKG.-4

3234



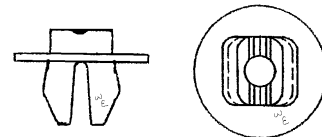
(47749-58010)  
PLASTIC PIN  
FRONT FENDER, BUMPER COVER  
16 MM HEAD DIAMETER  
28 MM OVERALL LENGTH  
TOYOTA 4 RUNNER, SOLARA,  
HIGHLANDER, SIENNA  
LEXUS-GX 470- 2000 & UP  
(USE WITH W&E #3233 CLIP)  
UNIT PKG.-10

3235



(52161-20010)  
PLASTIC PUSH RIVET  
BUMPER COVER  
FOR 9 MM HOLE  
18 MM FLANGE DIAMETER  
35 MM BASE LENGTH  
TOYOTA-2000 & UP  
(LONGER THAN W&E #2885)  
UNIT PKG.-10

3237

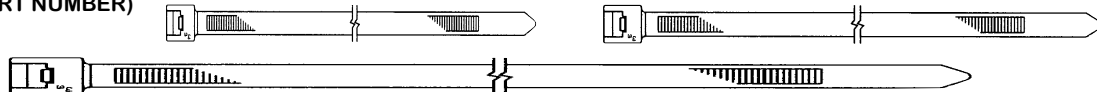


(90189-05142)  
PLASTIC SCREW GROMMET  
HEADLAMP ASSEMBLY/  
GRILLE RETAINER  
FOR 9 MM HOLE  
17 MM FLANGE DIAMETER  
TAKES 4.2 MM (#8) SCREW  
TOYOTA/ LEXUS 2001 & UP  
UNIT PKG.-25

**CTA-400**

**BLACK CABLE TIE ASSORTMENT**

(REINSTATED PART NUMBER)



CONTAINS 400 CABLE TIES IN A REUSABLE HANG-UP PLASTIC BOX  
(200 pcs. W&E#2865 - 4" LONG 18# TENSILE STRENGTH)  
(100 pcs. W&E#2385 - 7" LONG 50# TENSILE STRENGTH)  
(100 pcs. W&E#2386 - 11" LONG 50# TENSILE STRENGTH)  
UNIT PKG.-1

**“WE TRAK” UPDATE:**

KEEP YOUR CUSTOMERS CURRENT WITH PERIODIC UPDATING OF THEIR “WE TRAK” SOFTWARE. NEW ITEMS AND PRICE CHANGES WILL BE SUPPLIED EITHER BY EMAIL OR ON A CD. FOR THOSE REGISTERED “WE TRAK” USERS WHO WANT THE UPDATE EMAILED, ORDER PART NUMBER- **WTUE** REGISTERED USERS WHO REQUIRE A CD, ORDER PART NUMBER- **WTUCD**.



IF YOU HAVE CUSTOMERS WHO DO NOT HAVE OUR “WE TRAK” SOFTWARE INSTALLED, INTRODUCE THEM TO OUR EASY TO USE “WE TRAK” FASTENER INVOICING SYSTEM- PART NUMBER - **WE TRAK** SEE OUR CATALOG FOR INFORMATION OR CALL FOR DETAILS  
UNIT PKG.-1